

## CP SERIES - Cushion Rubber Wheels

Wheel Type: Cushion Rubber Tire on Polypropylene Center  
 Standard Finish: Computer Gray  
 Temperature Range: 14°F to 104°F  
 Durometer: 80° - 85° Shore A

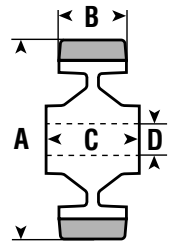
- Wheel Characteristics:**
- Soft, resilient cushion rubber tires on molded-plastic centers
  - Attractive appearance
  - Rustproof
  - Quiet running
  - Helps protect floors



A = Wheel Diameter    B = Tread Width    C = Hub Length    D = Bore

### CP SERIES

A	B	C	D	Load Capacity	Bearing Type	Wheel Weight	Wheel Part #	Used in Caster Series
4"	1"	1-3/4"	12mm*	150	Plain	.56	100 CP04	4, E
4"	1"	1-3/4"	12mm*	150	Roller	.60	100 CP14	4, E
5"	1-1/8"	1-3/4"	12mm*	195	Plain	.92	125 CP04	4, E
5"	1-1/8"	1-3/4"	12mm*	195	Roller	.96	125 CP14	4, E



\*Available in 3/8" bore. Please consult factory.

## RL SERIES - Cushion Rubber Wheels

Wheel Type: "Revvolite" Cushion Rubber Tire on Polypropylene Center  
 Standard Finish: Gray  
 Temperature Range: 14°F to 104°F  
 Durometer: 83° - 87° Shore A

- Wheel Characteristics:**
- Soft, resilient cushion rubber tires on molded-plastic centers
  - Attractive appearance
  - Rustproof
  - Quiet running
  - Hygienic
  - Helps protect floors



A = Wheel Diameter    B = Tread Width    C = Hub Length    D = Bore

### RL SERIES

A	B	C	D	Load Capacity	Bearing Type	Wheel Weight	Wheel Part #	Used in Caster Series
1-5/8"	11/16"	3/4"	5/16"	30	Plain	.09	040 RL01	1
2"	11/16"	3/4"	5/16"	30	Plain	.10	050 RL01	1
2"	3/4"	13/16"	5/16"	75	Plain	.12	050 RL02	2
2-1/2"	3/4"	3/4"	5/16"	35	Plain	.15	063 RL01	1
2-1/2"	1"	1-3/16"	10mm	65	Plain	.22	063 RL03	3
3"	3/4"	15/16"	3/8"	80	Plain	.23	075 RL02	2
3"	1"	1-3/16"	10mm	85	Plain	.28	075 RL03	3
4"	3/4"	15/16"	3/8"	90	Plain	.32	100 RL02	2
4"	1"	1-3/16"	3/8"	110	Plain	.43	100 RL03	3
5"	1-1/8"	1-3/16"	12mm	120	Plain	.50	125 RL03	3

