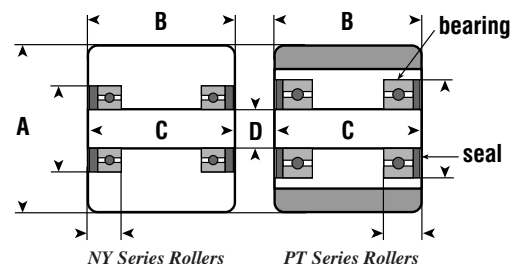
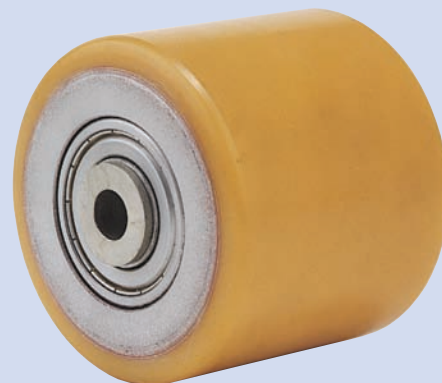
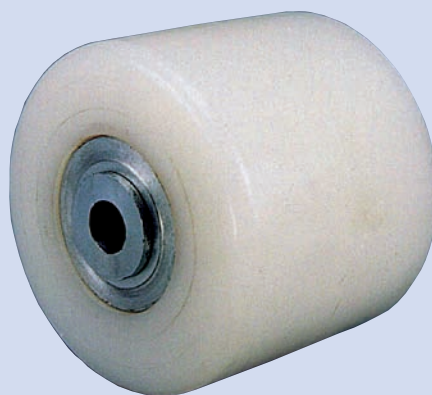


NY & PT SERIES Rollers - Nylon & Polyurethane

NY Roller Type: Nylon Roller on Cast-Iron Center
Standard Finish: White
Temperature Range: -4°F to 176°F (41°F to 104°F preferred)
Durometer: 80° - 85° Shore D

PT Roller Type: "Revvothane" (Vulkollan®) Polyurethane on Cast-Iron Center
Standard Finish: Clear Resin Shellac Painted
Temperature Range: -22°F to 176°F
Durometer: 92° - 97° Shore A

- Roller Characteristics:**
- Pallet truck type rollers sharing the same characteristics with NY Series (see page 00) and PT Series (see page 00) wheels.
 - Available with or without Precision Ball bearings



A = Wheel Diameter B = Tread Width C = Hub Length D = Bore

| NY & PT SERIES | | | | | | | |
|----------------|----------|----------|--------|---------------|-----------------------|-------------|--------------|
| A | B | C | D | Load Capacity | Bearing Type | Roller Type | Wheel Part # |
| 3-3/8" | 2-15/16" | 2-7/8" | 1-5/8" | 900 | Less Bearings & Seals | Nylon | 085 NY8M |
| 3-3/8" | 2-15/16" | 2-7/8" | 20mm* | 900 | Precision Ball | Nylon | 085 NY2M |
| 3-3/8" | 3-15/16" | 3-15/16" | 1-5/8" | 900 | Less Bearings & Seals | Nylon | 085 NY8B |
| 3-3/8" | 3-15/16" | 3-15/16" | 20mm* | 900 | Precision Ball | Nylon | 085 NY2B |
| 3-3/8" | 2-15/16" | 2-15/16" | 1-7/8" | 1320 | Less Bearings & Seals | Revvothane | 085 PT8M |
| 3-3/8" | 2-15/16" | 2-15/16" | 20mm* | 1320 | Precision Ball | Revvothane | 085 PT2M |
| 3-3/8" | 3-15/16" | 3-15/16" | 1-7/8" | 1760 | Less Bearings & Seals | Revvothane | 085 PT8C |
| 3-3/8" | 3-15/16" | 3-15/16" | 20mm* | 1760 | Precision Ball | Revvothane | 085 PT2C |

*Available in 1/2" bore. Please consult factory.