

PL SERIES - Polypropylene Wheels

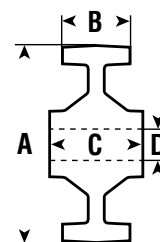
Wheel Type: Polypropylene
 Standard Finish: Black
 Temperature Range: Normal room temperature

- Wheel Characteristics:**
- Economical alternative to Nylon wheels
 - Preferred for use on good floor surfaces to carry light loads at room temperature
 - Resistant to most chemicals and acids
 - Non-marking, non-chipping, and steam-cleanable
 - Available with Delrin bearings



A = Wheel Diameter B = Tread Width C = Hub Length D = Bore

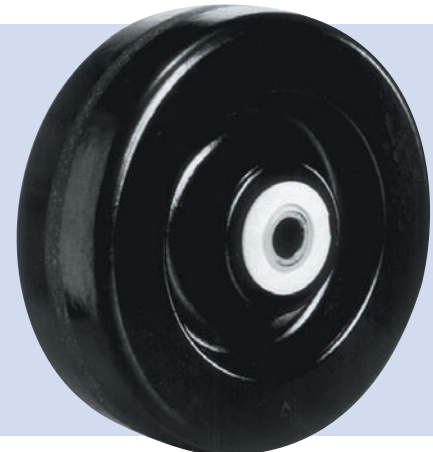
PL SERIES								
A	B	C	D	Load Capacity	Bearing Type	Wheel Weight	Wheel Part #	Used in Caster Series
4"	1-1/2"	1-5/8"	1/2"	400	Plain	.26	100 PL04	4, E
4"	2"	2-3/8"	3/4"	450	Roller	.34	100 PL1G	G, H, K
5"	1-1/2"	1-5/8"	1/2"	450	Plain	.36	125 PL04	4, E
5"	1-1/2"	1-5/8"	1/2"	450	Roller	.40	125 PL14	4, E
5"	2"	2-3/8"	3/4"	650	Roller	.46	125 PL1G	G, H, K
6"	2"	2-3/8"	3/4"	750	Roller	.52	150 PL1G	5, G, H, K
8"	2"	2-3/8"	3/4"	1000	Roller	.73	200 PL1G	5, G, H, K



RP SERIES - Phenolic Resin Wheels

Wheel Type: "Revvoplast" Phenolic Resin
 Standard Finish: Black
 Temperature Range: -50°F to 260°F (For temperatures above 180°F, specify metal washers)
 Durometer: 90° Shore D; 02 Rockwell E

- Wheel Characteristics:**
- Manufactured from canvas duck reinforced phenolic resin
 - Extremely hard and will support high-static loadings for long periods
 - Low rolling resistance, hard wearing, shock resistant, and easy on floor surfaces
 - High resistance to chemical attack
 - Withstands high temperatures
 - Consult factory for high-temperature and laminated phenolic wheels



A = Wheel Diameter B = Tread Width C = Hub Length D = Bore

RP SERIES								
A	B	C	D	Load Capacity	Bearing Type	Wheel Weight	Wheel Part #	Used in Caster Series
3"	1-1/2"	1-5/8"	1/2"	375	Plain	.30	075 RP04	4
3"	1-1/2"	1-13/16"	3/4"	400	Roller	.43	075 RP14	4
4"	1-1/2"	1-5/8"	1/2"	600	Plain	.50	100 RP04	E, 4
4"	1-1/2"	1-13/16"	3/4"	400	Roller	.70	100 RP14	E, 4
4"	2"	2-3/8"	3/4"	800	Roller	.81	100 RP1G	G, H, K
5"	1-1/2"	1-5/8"	1/2"	600	Plain	.71	125 RP04	E, 4
5"	1-1/2"	1-13/16"	3/4"	600	Roller	.81	125 RP14	E, 4
5"	2"	2-3/8"	3/4"	1000	Roller	.92	125 RP1G	G, H, K
6"	2"	2-3/8"	3/4"	1200	Roller	.99	150 RP1G	5, G, H, K
8"	2"	2-3/8"	3/4"	1400	Roller	1.07	200 RP1G	5, G, H, K

