

RU SERIES - Rubber-on-Cast-Iron Wheels

Wheel Type: Rubber Tire on Cast-Iron Center
 Standard Finish: Black
 Temperature Range: -58°F to 167°F
 Durometer: 83° - 87° Shore A

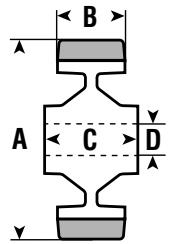
- Wheel Characteristics:**
- Rubber tires molded to cast-iron centers under heat and pressure to provide a tough, durable bond
 - Combine high load capacities with silent running and floor-preserving qualities
 - Designed to withstand rough service conditions

- Special Features:**
- For more demanding applications, RU Series wheels with antistatic, electrically conductive, or oil-resistant rubber are available. Since load capacities may be affected, please contact the factory for details.



A = Wheel Diameter B = Tread Width C = Hub Length D = Bore

RU SERIES								
A	B	C	D	Load Capacity	Bearing Type	Wheel Weight	Wheel Part #	Used in Caster Series
2"	3/4"	15/16"	5/16"	90	Plain	.28	050 RU02	2
2-1/2"	1"	1-3/16"	3/8"	150	Plain	.50	063 RU03	3
3"	3/4"	15/16"	3/8"	90	Plain	.53	075 RU02	2
3"	1"	1-3/16"	3/8"	150	Plain	.73	075 RU03	3
3"	1-1/4"	1-3/4"	12mm	175	Plain	.89	075 RU04	4
4"	3/4"	15/16"	3/8"	95	Plain	.55	100 RU02	2
4"	1-3/8"	1-3/4"	12mm*	300	Plain	1.75	100 RU04	E, 4
4"	1-1/2"	2-3/8"	20mm**	330	Roller	3.55	100 RU1H	G, H, K
5"	1-1/2"	1-3/4"	12mm*	350	Plain	2.81	125 RU04	E, 4
5"	1-1/2"	1-3/4"	12mm*	350	Roller	3.05	125 RU14	E, 4
5"	1-9/16"	2-3/8"	20mm**	375	Roller	3.30	125 RU1H	G, H, K
5"	1-9/16"	1-15/16"	20mm**	375	Precision Ball	5.21	125 RU2H	G, H, K
6"	1-3/4"	2-3/8"	20mm**	810	Roller	5.03	150 RU15	5, G, H, K, P
6"	1-3/4"	2-3/8"	25mm	810	Roller	7.64	150 RU1A	
6"	1-9/16"	1-15/16"	20mm	810	Precision Ball	4.42	150 RU2H	5, G, H, K, P
8"	2"	2-3/8"	20mm**	1175	Roller	7.92	200 RU15	5, G, H, K, P
8"	2"	1-15/16"	20mm**	1175	Precision Ball	8.52	200 RU2H	5, G, H, K, P
8"	2"	2-3/8"	25mm	1175	Roller	11.98	200 RU1A	
10"	2-1/8"	2-1/4"	25mm	1350	Precision Ball	15.03	250 RU2H	H, P
10"	2-1/8"	2-3/8"	25mm	1350	Roller	15.03	250 RU1H	H, P
10"	3"	3-1/2"	3/4"	2240	Taper Roller	19.70	250 RUTT	T
10"	3"	3-1/16"	25mm	2240	Precision Ball	21.56	250 RU2P	P
10"	3"	3"	30mm	2240	Precision Ball	22.44	250 RU2Q	
12"	2-1/8"	2-1/4"	25mm	1500	Precision Ball	20.70	300 RU2H	H, P
12"	2-1/8"	2-3/8"	25mm	1500	Roller	20.35	300 RU1H	H, P
12"	3"	3-1/4"	1-1/4"	2240	Roller	30.14	300 RURA	
12"	3"	3-1/16"	25mm	2240	Precision Ball	30.80	300 RU2P	P
12"	3"	3"	30mm	2240	Precision Ball	20.75	300 RU2Q	
14"	3"	3-1/4"	1-1/4"	3000	Roller	24.20	350 RURA	
14"	3"	3-1/16"	25mm	3000	Precision Ball	30.80	350 RU2P	P
14"	3"	3"	30mm	3000	Precision Ball	30.80	350 RU2Q	
16"	4"	4-1/2"	1"	3740	Taper Roller	33.00	400 RUTT	
16"	4"	4-1/2"	1-1/2"	3740	Taper Roller	30.80	400 RUTA	
16"	4"	4-3/32"	35mm	3740	Precision Ball	30.80	400 RU2A	



*Available in 3/8" bore. Please consult factory.
 **Available in 1/2" bore. Please consult factory.