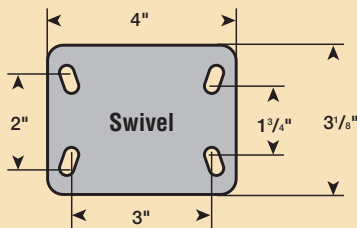


## SUSSEX 63 SERIES

Sussex 63 Series swivel casters from Revvo are designed for low-height applications requiring movement over short distances such as business machines, displays, and appliances. They are supplied with 2-1/2" size wheels and have a load capacity of 550 lbs. Sussex 63 Series casters are available with a rectangular top plate (TSSU) or bolt hole style frame (BSSU).

### Standard Top Plate



Sussex 63 top plates have fixing holes to suit 5/16" diameter bolts.

Sussex 63 bolt hole frames have a mounting center hole of 7/16".



Top plate style swivel caster shown with Step-Down Brake engaged on black nylon wheel.

Bolt hole style swivel caster shown with Step-Down Brake disengaged.

## SUSSEX 63 SERIES

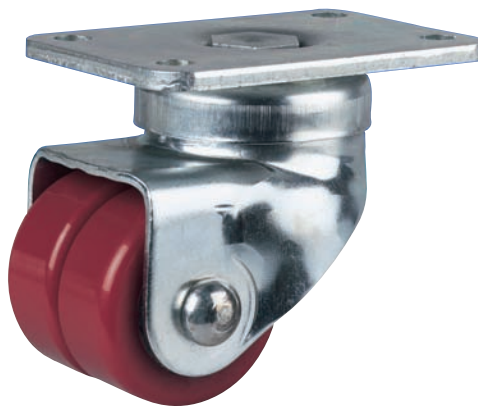
Wheel Diameter	Overall Height	Swivel Radius	Tread Width	Load Capacity	Bearing	Wheel	Top Plate	Bolt Hole
							Swivel Part #	Swivel Part #
2-1/2"	3-1/2"	2-11/16"	1-7/16"	550	Roller	Gray Nylon	TSSU 063 GN1S	BSSU 063 GN1S
2-1/2"	3-1/2"	2-11/16"	1-7/16"	550	Roller	Gray Nylon	TSSU 063 GN1S-L	BSSU 063 GN1S-L
2-1/2"	3-1/2"	2-11/16"	1-7/16"	550	Roller	Gray Nylon	TSSU 063 GN1S-B	BSSU 063 GN1S-B

Please consult factory for specifications and part numbers of phenolic wheel models.

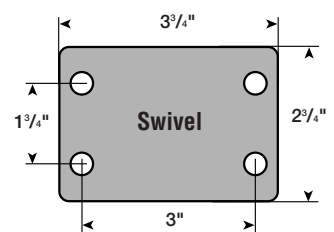
Notes: To order hand-operated locking brake, select Swivel Part # with suffix L. To order Step-Down Brake, select Swivel Part # with suffix B.

## AH SERIES

Revvo AH Series swivel casters provide a twin-wheel design for business machines, displays, appliances and other low-height applications. They are supplied with 2" polyurethane wheels on a cast iron center. AH Series casters have a load capacity of 440 lbs. and are fitted with a rectangular top plate.



### Standard Top Plate



AH top plates have fixing holes to suit 5/16" diameter bolts.

A = Wheel Diameter    B = Overall Height    C = Swivel Radius    D = Tread Width

## AH SERIES

Wheel Diameter	Overall Height	Swivel Radius	Load Capacity	Bearing	Wheel	Swivel Part #
2"	3-1/4"	2-3/16"	440	Ball	Polyurethane	TSAH 050 PU2A